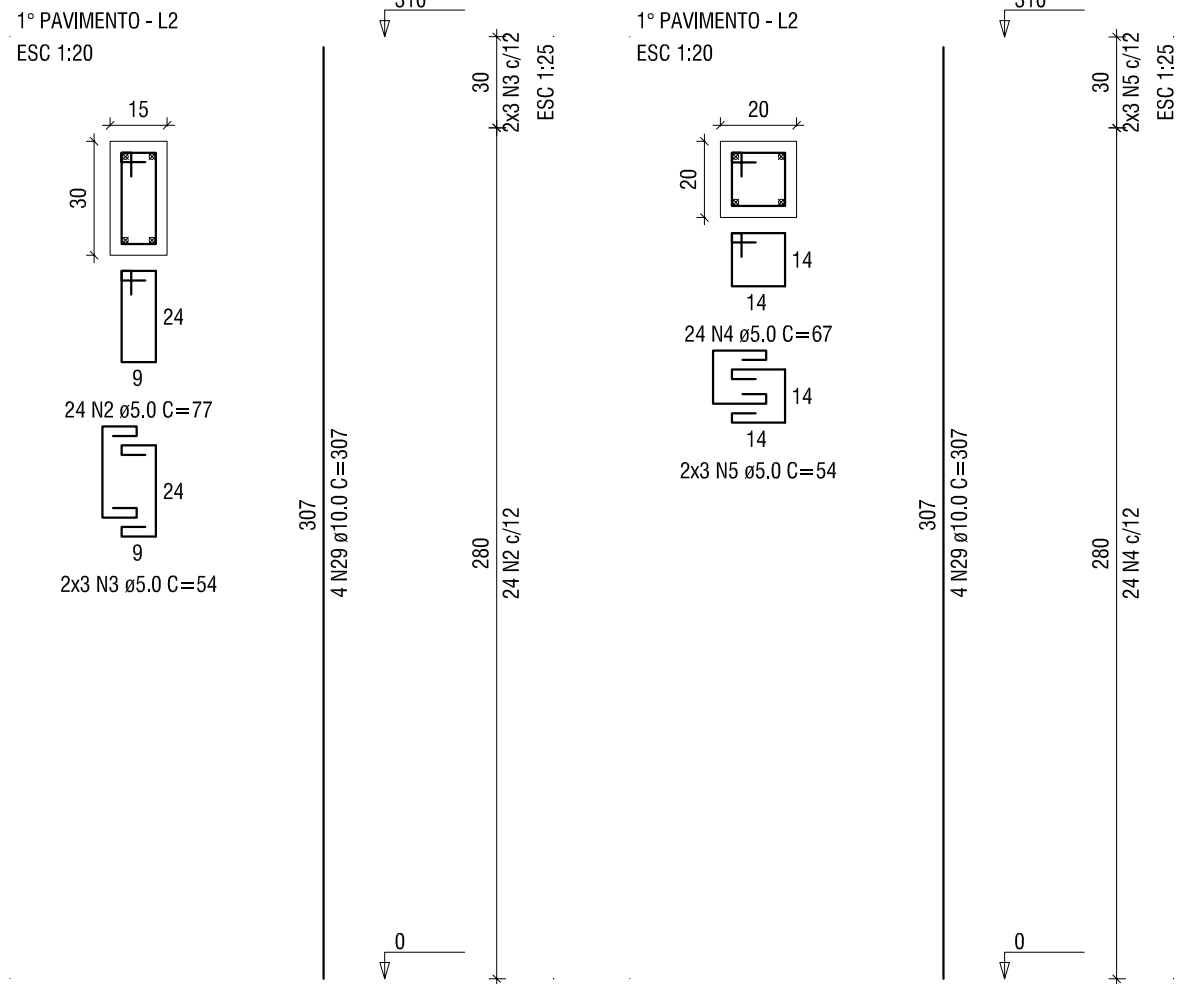
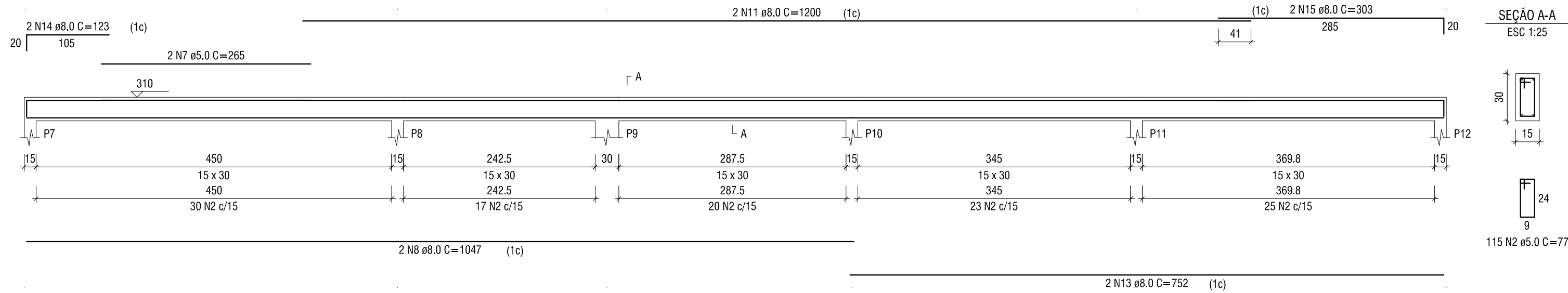


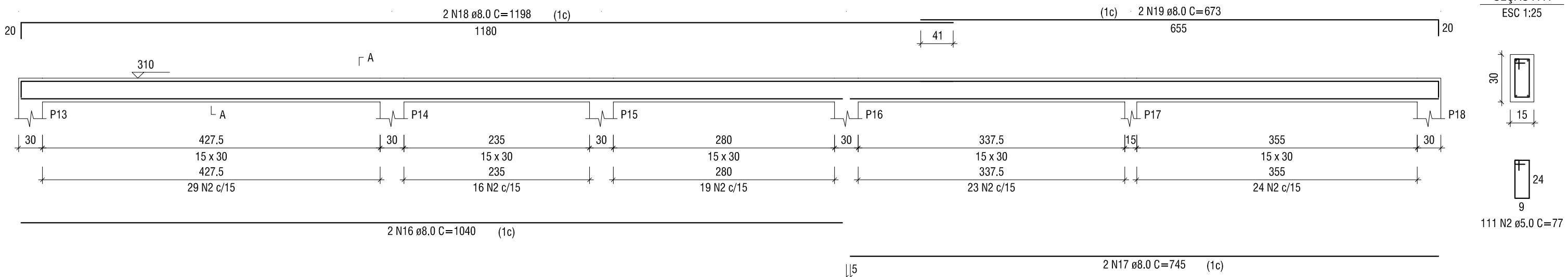
P1=P2=P3=P4=P5=P6=P7=P8=P9=
=P10=P11=P12=P13=P14=P15=
=P16=P17=P18



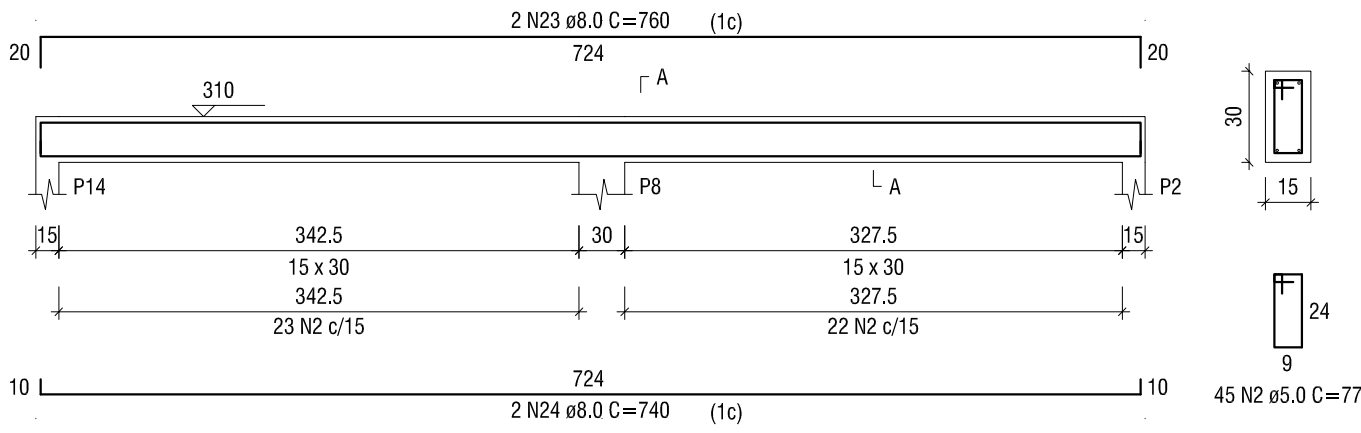
V2
ESC 1:50



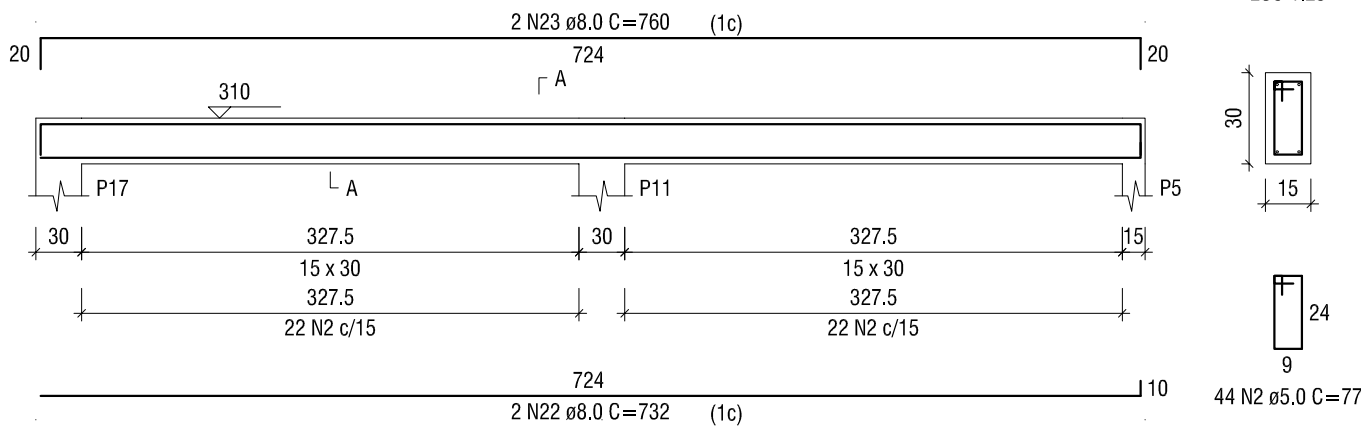
V3
ESC 1:50



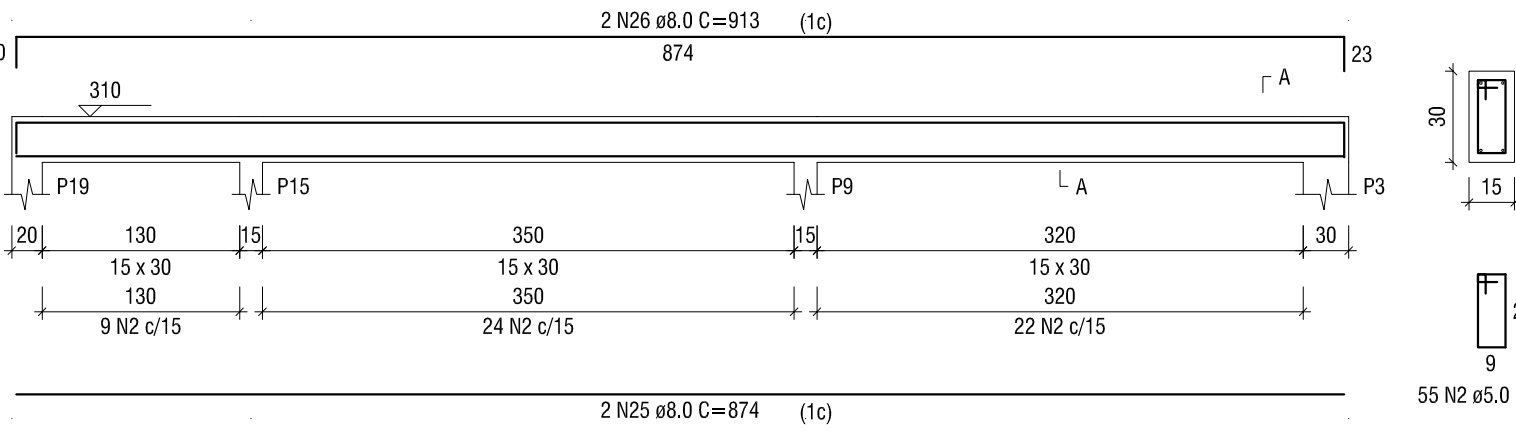
V6
ESC 1:50



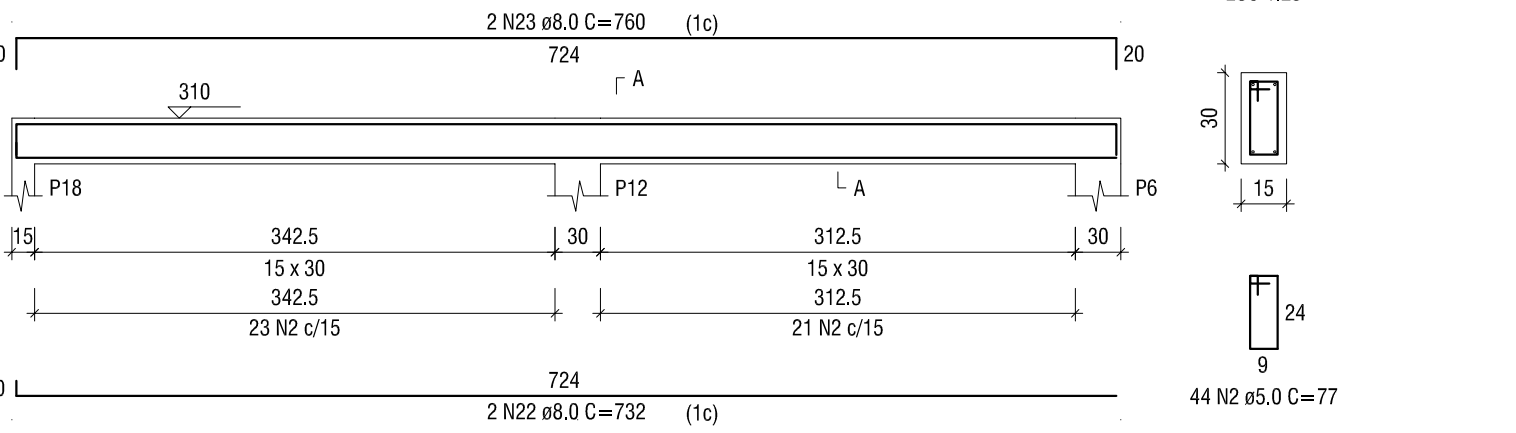
V9
ESC 1:50



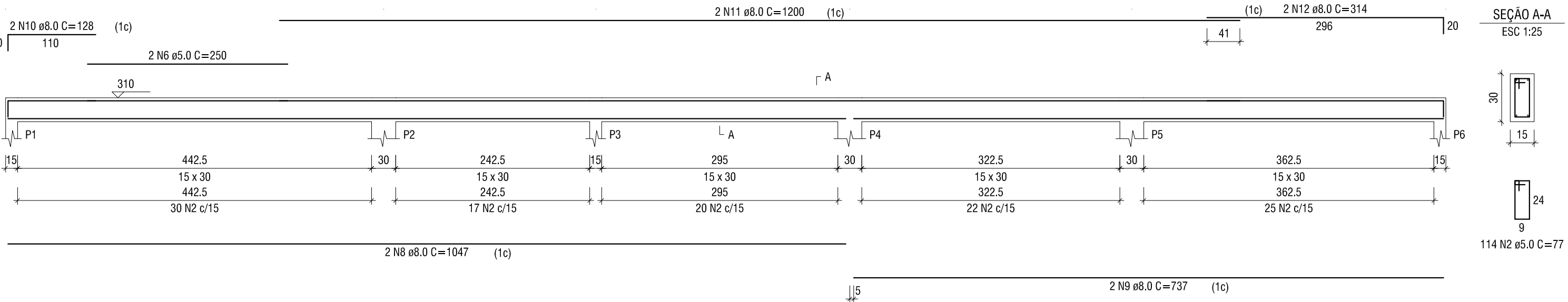
V7
ESC 1:50



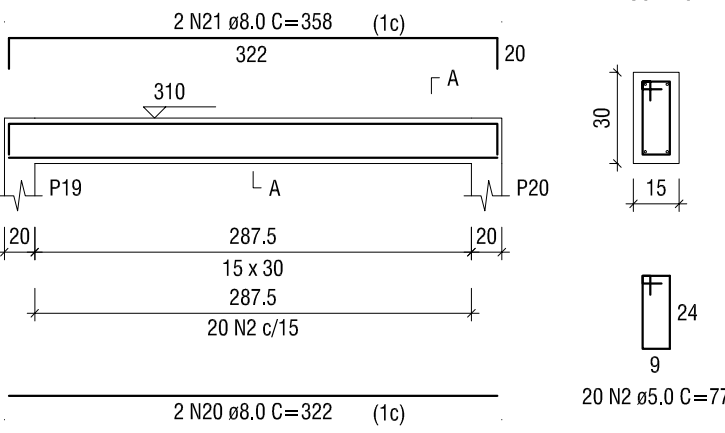
V10
ESC 1:50



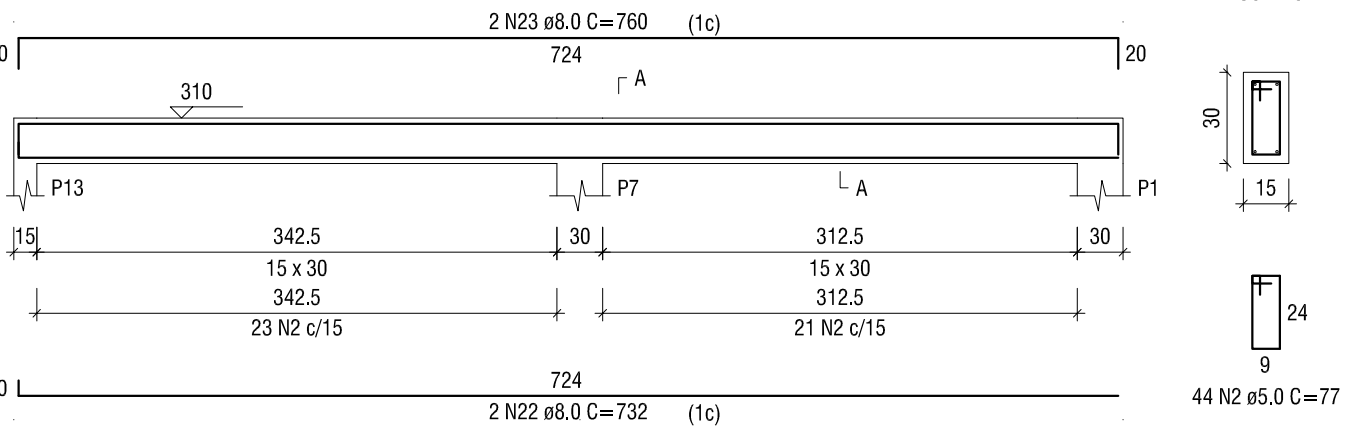
V1
ESC 1:50



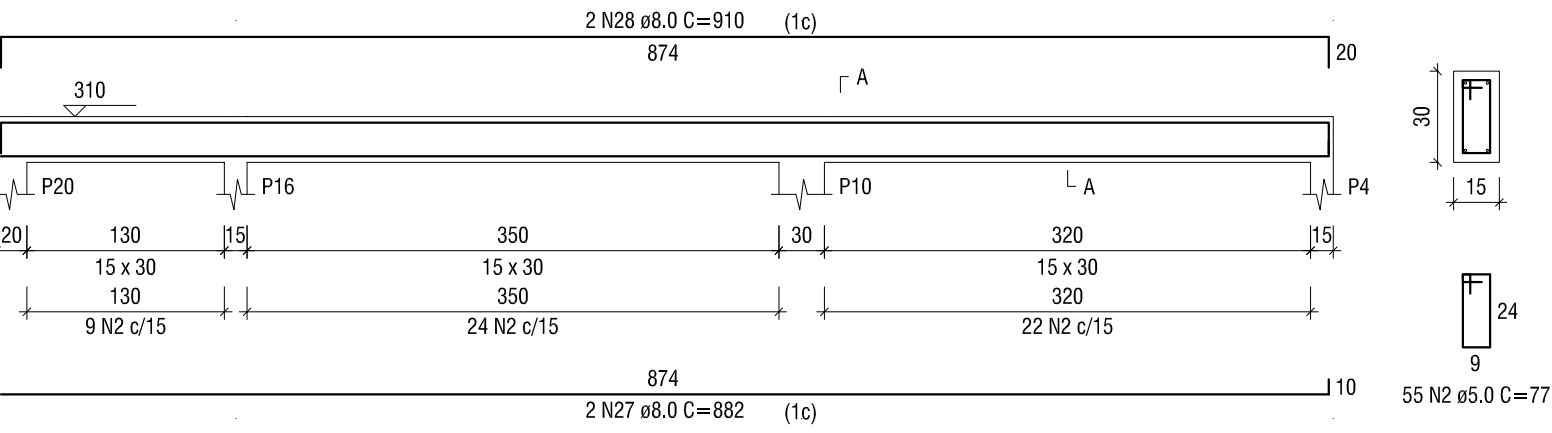
V4
ESC 1:50



V5
ESC 1:50



V8
ESC 1:50



RELAÇÃO DO AÇO

Positivos X	18xP1	2xP19
V1	V2	V3
V4	V5	V6
V7	V8	V9
V10		

AÇO	N	DIAM (mm)	QUANT	C.UNIT (cm)	C.TOTAL (cm)
CA60	1	5.0	18	319	5742
	2	5.0	1079	77	83083
	3	5.0	108	54	5832
	4	5.0	48	67	3216
	5	5.0	12	54	648
	6	5.0	2	250	500
	7	5.0	2	265	530
CA50	8	8.0	4	1047	4188
	9	8.0	2	737	1474
	10	8.0	2	128	256
	11	8.0	4	1200	4800
	12	8.0	2	314	628
	13	8.0	2	752	1504
	14	8.0	2	123	246
	15	8.0	2	303	606
	16	8.0	2	1040	2080
	17	8.0	2	745	1490
	18	8.0	2	1198	2396
	19	8.0	2	673	1346
	20	8.0	2	322	644
	21	8.0	2	358	716
	22	8.0	6	732	4392
	23	8.0	8	760	6080
	24	8.0	2	740	1480
	25	8.0	2	874	1748
	26	8.0	2	913	1826
	27	8.0	2	882	1764
	28	8.0	2	910	1820
	29	10.0	80	307	24560

RESUMO DO AÇO

AÇO	DIAM (mm)	C.TOTAL (m)	QUANT + 5% (Barras)	UNIT	PESO + 5% (kg)
CA50	8.0	414.8	37	12 m	171.9
CA60	10.0	245.6	22	12 m	159
	5.0	995.5	88	12 m	161.1

PESO TOTAL (kg)

CA50 330.9

CA60 161.1

Volume de concreto (C-25) = 8.43 m³

Área de forma = 143.14 m²

Armação positiva das lajes do pavimento 1° PAVIMENTO (Eixo X)

escala 1:50

Projeto Estrutural

OBRA:

Construção da Escola Municipal Hermenegildo

ENDEREÇO:

CORREGO SAPUCAIA - ZONA RURAL - LAJINHA/MG

RESPONSÁVEL TÉCNICO:

THAÍS BOECHAT DE LIMA BASTOS

CREA: 212.895/D

CONTEÚDO:

1° PAVIMENTO - PILARES, VIGAS E LAJE MACIÇA

ÁREA DA OBRA:

136,75 MP

ÁREA DO TERRENO:

PROPRIETÁRIO:

PREFEITURA MUNICIPAL DE LAJINHA

DESENHO:

THAÍS BOECHAT DE LIMA BASTOS

DATA:

05/2024